

MUSEUM PLAN

Historic Saranac Lake will establish a preeminent museum campus in the heart of the village presenting the history of the Saranac Lake region.



HISTORIC SARANAC LAKE SS

89 Church Street, Suite 2
Saranac Lake, NY 12983
518-891-4606

MUSEUM PLAN

Our Vision: Historic Saranac Lake will establish an expanded museum campus in downtown Saranac Lake that presents the rich history of the Saranac Lake region as well as the story of the village as a center for tuberculosis treatment and research. The new exhibits will be:

- ◆ **Interactive** — Hands-on, multi-media exhibits will capture the interest of visitors of all ages.
- ◆ **Changing** — Rotating exhibits will explore a variety of topics of interest to visitors and local residents.
- ◆ **Integrated** — The two buildings will be unified into one attractive, accessible museum campus.
- ◆ **Relevant** — Laboratory exhibits will connect with modern day issues in science and public health.

First Floor Trudeau Building:

- ◆ Visitors will enter through the Main Street entrance. In the front parlor, they will be introduced to the overarching stories of the museum, the life of Dr. E. L. Trudeau, and the history of both buildings.
- ◆ An exhibit created in consultation with the Iroquois Six Nations Cultural Center will establish that Indigenous peoples have considered this region a homeland for thousands of years until the present day.
- ◆ A film room will present a new introductory film created in 2022 with support from National Endowment for the Humanities.
- ◆ A large interactive digital map will orient visitors to the region and the stories in the museum. Visitors will be able to explore history of the great camps, lake communities, churches, children's camps, and hamlets in the region.
- ◆ A room will explore the outdoor life in the Adirondacks, discussing recreation tourism and the history of the Park, starting with the Forever Wild designation through to the establishment of the APA.
- ◆ Interactive exhibits will explore the economic development of the region in the 1800s, with farming, logging, and the arrival of the railroad.
- ◆ A research room will facilitate public access to our collection. Improved museum collections storage space will allow us to grow our collection and make it available to the public.

Second Floor Trudeau Building:

- ◆ Visitors will view exhibits on Winter Carnival and a gallery of Doonesbury artwork by Garry Trudeau.
- ◆ Visitors will explore the story of Trudeau, tuberculosis, the sanatoria, and cure cottages. We will discuss the patient experience in Saranac Lake, including the important role of occupational therapy.
- ◆ Visitors will learn about the architectural evolution of cure porches, visiting Dr. Trudeau's sleeping porch and his first sitting-out cure porch.
- ◆ An area is designated for rotating special exhibits in collaboration with other museums and collections.
- ◆ A room will host our rare collection of personal items pertaining to the great composer Béla Bartók, who spent the last three summers of his life in Saranac Lake.

Saranac Laboratory:

Laboratory exhibits will focus on the history of science in Saranac Lake, research into industrial disease, and modern day issues in public health. Exhibits will feature hands-on science activities and an exhibit of antique pharmacy items from Post Office Pharmacy. Planning is underway to install a handicap lift at the laboratory for complete accessibility across the museum campus.

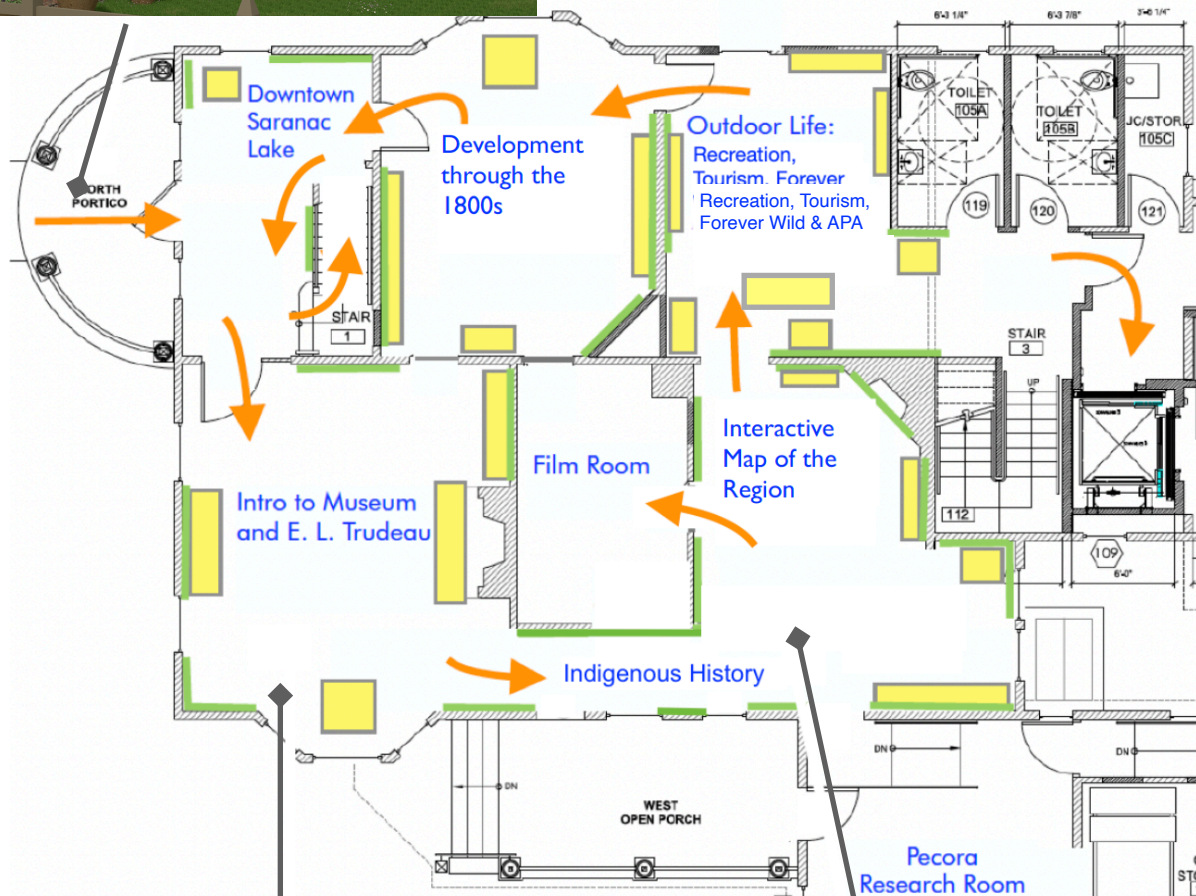
Exhibit Planning:

In 2019, Historic Saranac Lake contracted with a consultant to define the vision for both museum buildings, articulate main themes, and lay out interpretive approaches. The 25 page Interpretive Plan is available to review on our website. In 2020 we contracted with Exhibits and More to proceed with the next phase of exhibit planning. The traffic flow has been designed in consultation with our architectural team. HSL has secured a \$50,000 IMLS Inspire! Grant to support the next phase of exhibit development by a team of exhibit design professionals led by Exhibit Developer Kate Cravens and Exhibit Designer Travis Wood. The schematic exhibit design project launched in the fall of 2022.

TRUDEAU BUILDING, FIRST FLOOR EXHIBITS



Visitors enter through the restored Main Street entrance. First floor exhibits present the history of the Saranac Lake region with interactive exhibits that complement the historic fabric of each space.



The front parlor area presents an overview of the museum, tells the architectural story of the spaces, and introduces visitors to the life and work of Dr. E. L. Trudeau

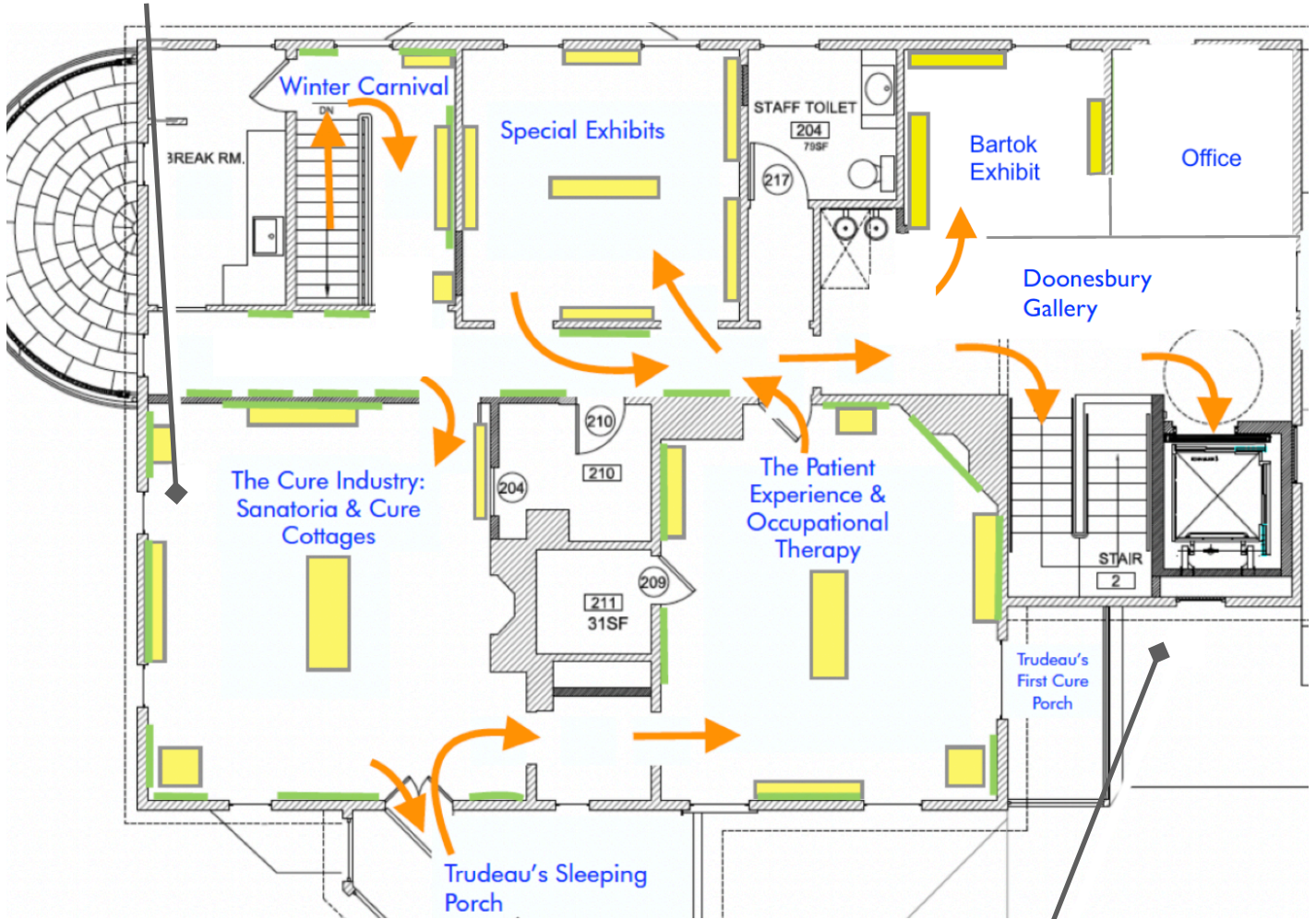


Visitors proceed to a film room and exhibits presenting history of Indigenous peoples in the Adirondacks. A large open space will feature a digital interactive map of the region.

TRUDEAU BUILDING, SECOND FLOOR EXHIBITS



The second floor presents the history of the TB cure in Saranac Lake. We explore the life and work of Dr. Trudeau, the sanatoria, the cure cottages, and the patient experience. Oral histories present authentic human stories.



Dr. Trudeau's restored cure will interpret the fresh air cure experience and the evolving architecture of cure porches.

The second floor will be made accessible with a handicap lift. Visitors will exit from the back of the Trudeau Building to visit the Saranac Laboratory, the museum store, and the Cure Porch on Wheels.