



HSL HISTORIC  
SARANAC  
LAKE

Exhibition Concept  
Summer 2023





HSL HISTORIC  
SARANAC  
LAKE



*If I had but a short time to live, I yearned for surroundings that appealed to me, and it seemed to meet a longing I had for rest and the peace of the great wilderness.*

—Dr. Edward L. Trudeau



Dr. Trudeau



Cure Cottage Porch



Mitchel Sabattis, Abenaki guide

Saranac Lake Free Library



## PROJECT OVERVIEW

*It's official.*

**H**istoric Saranac Lake (HSL) now has an interpretive campus that extends beyond the Saranac Laboratory to include the home of Dr. Edward L. Trudeau. With these two buildings, HSL has more than 5,500 square feet of interpretive space to explore the history and culture of this region.

Step into the Trudeau Building to discover how the natural environment of the Adirondacks has shaped and has been shaped by the lifeways, cultures, and economies of people living in the Saranac Lake region. On the second floor, explore Saranac Lake's unique history as a health resort.

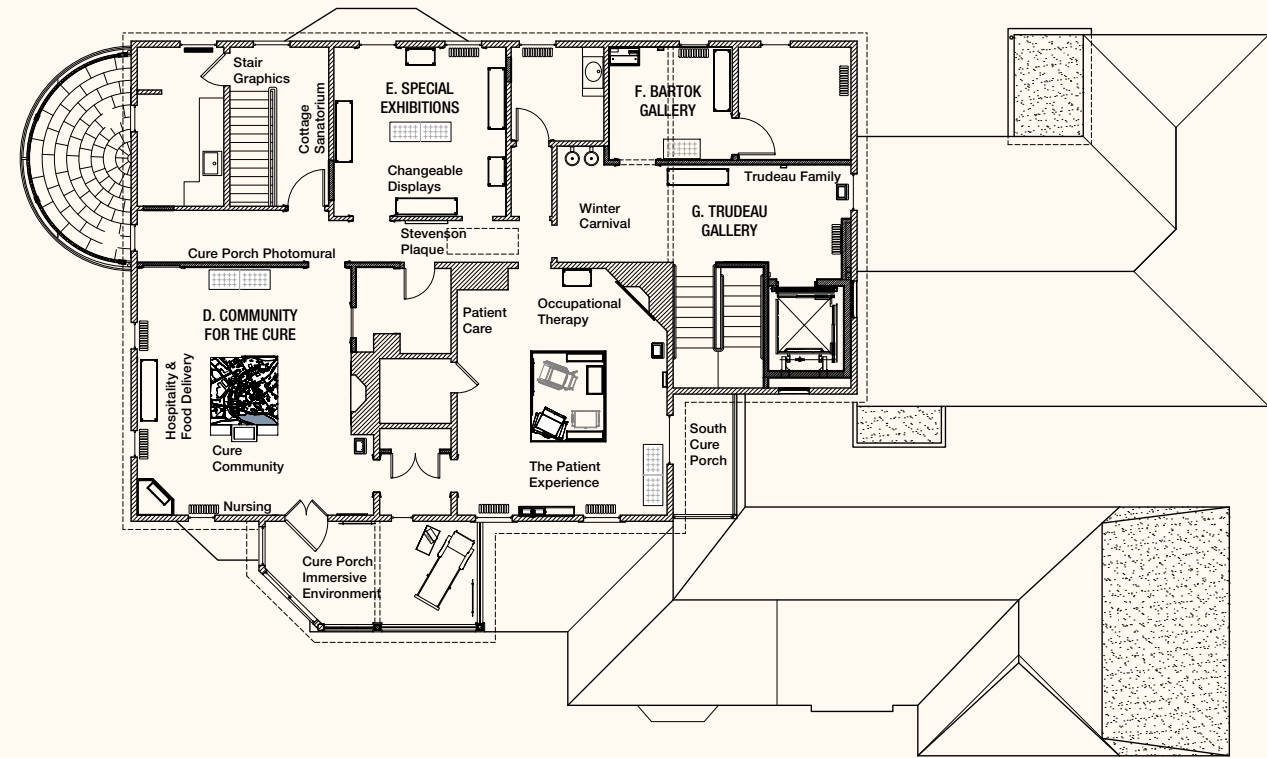
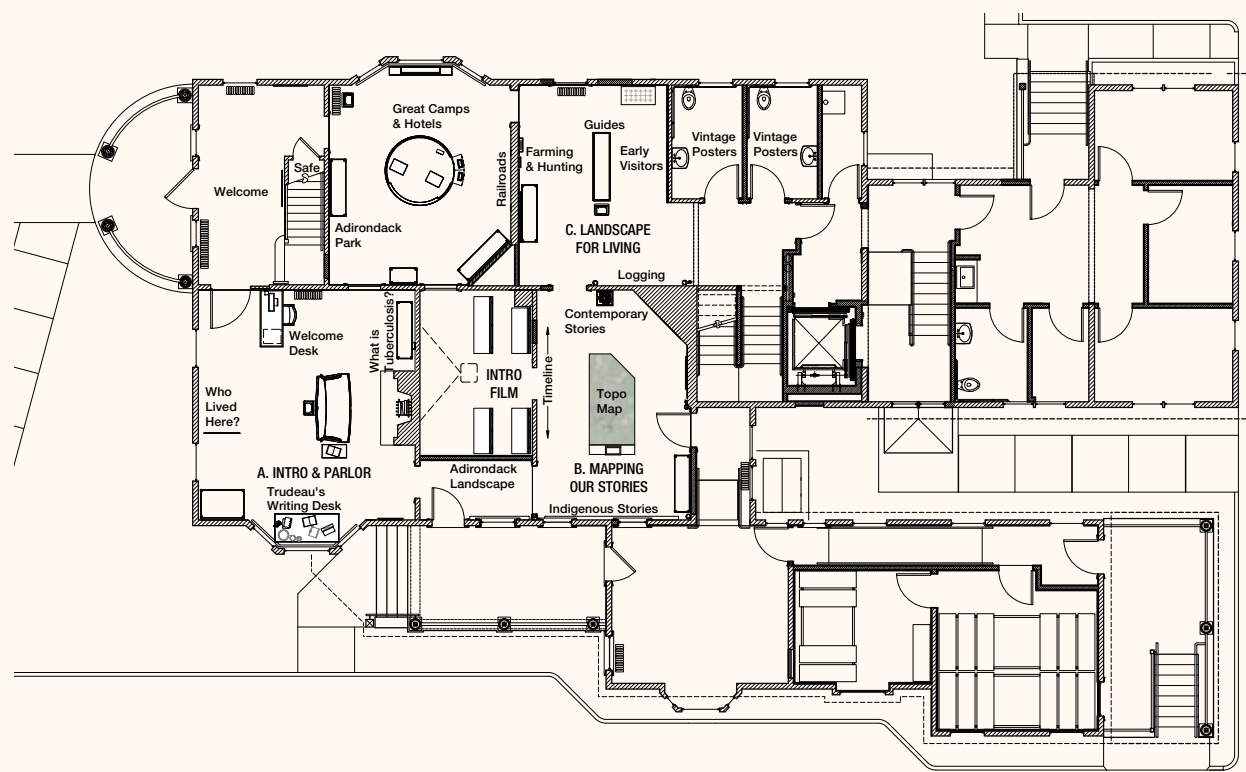
Head next door to find updated Saranac Laboratory exhibits focused on the tuberculosis research associated with Dr. Trudeau and his legacy. All of these stories, a new introductory film, special temporary exhibits, and ongoing educational programming will bring new visitors and encourage repeat visitation.



1931 Trudeau nursing graduates



1924 Winter Carnival parade entry



## ENTER ON MAIN STREET

Your visit begins at the Trudeau Building. The first floor includes four galleries introducing the Trudeau family, honoring the Iroquoian and Algonquian first peoples, and identifying the complex interaction between 19th century residents and the Adirondack landscape.

These galleries provide cultural and historical context using exhibit designs that respect the home's Victorian origins while utilizing contemporary exhibition techniques. Experiences will include interactive elements appealing to diverse learners, as well as intriguing artifacts and authentic first-person accounts.

## TRUDEAU AND TUBERCULOSIS

Moving up to the second floor, you'll become immersed in the story of Dr. Trudeau's fight against tuberculosis. With each stair step, you'll learn early health measures protecting against TB. Most of this upper floor elaborates on Trudeau's efforts, including his Adirondack Cottage Sanatorium and

its methods, the transformation of Saranac Lake as a community for the cure, and the experience of TB patients. Remaining galleries on this floor will be devoted to composer Béla Bartók and other famous visitors, stories of the extended Trudeau family, including Garry Trudeau's *Doonesbury*, and special temporary exhibits.



## TRUDEAU AT HOME

The crackle and pop of a faux fire and comfy seating will beckon you into the Trudeau Building's first gallery. Original architectural elements and homey vintage decor provide a backdrop to learn more about the Trudeau family. Stroll over to Dr. Trudeau's desk to explore copies of his correspondence or lift the telephone receiver to hear personal family accounts. Leaf through a family photo album or join your children in playing with a basket of family dolls.

In the family parlor, you will also find a Building Detective interactive, an interpretive pedestal repeated throughout exhibit galleries. Its tablet holds historic photographs exploring the original floor plan of the house, its previous decor, and other architectural items of interest.



*The front door was never locked and from a small entrance hall you entered directly into a large and tastefully furnished living room... They were always 'at home' to their friends in the evening...to discuss affairs of the laboratory, or the sanatorium, of the church, and of the day.*

—Dr. Lawrason Brown, colleague and friend

## MAPPING OUR STORIES

Stepping into this gallery, you'll see an orientation space featuring the history of this region's Iroquoian and Algonquian residents. You'll be surrounded by Native belongings and artwork; you can hear Indigenous languages or try your hand at making a packbasket.

You won't be able to miss the three-dimensional map that dominates the center of this gallery. This map orients you to the Adirondack region covered by HSL exhibits. The push of a button illuminates spots identified with Native heritage, TB sanatoria, Great Camps, and other interpretive sites. For a deeper dive, delve into an interactive tablet with more details about these locations.

Before leaving this gallery, you'll want to step into the adjacent theater space to watch HSL's new introductory film.



This room is created in consultation with David Kanietakeron Fadden and features his artwork.



## LANDSCAPE FOR LIVING

To understand Saranac Lake's history, you need to explore the interaction between the region's mountainous landscape and the residents' economic choices. The next two galleries explore the farming, logging, and guiding of the 19th century, and the eventual rise of recreational opportunities.

You'll discover that a diverse group of residents participated in all these activities. Their narratives bring the history to life. Between the two rooms, you'll find artifacts supporting these stories coupled with hands-on or touchscreen-driven interactives to explore.

This is also the era when Dr. Edward L. Trudeau made his first visits to the Adirondacks and discovered the healing power of a life spent in nature. Our story comes full circle with his arrival at Paul Smith's resort and sets the stage for the healing stories that will appear upstairs.



Upper Saranac Lake, courtesy of Marc Wanner





## COMMUNITY FOR THE CURE

Imagine walking onto a screened porch in freezing weather to recline on a cure chair under a buffalo robe. You'll have this opportunity on Trudeau's second floor cure porch. Heading upstairs, you'll find photomurals featuring the community's TB story. Dr. Trudeau's sanatorium cure, the town's role as a cure community, and the TB patients' experience will dominate the second floor spaces.

In the first gallery, you'll find an interactive streetscape map locating cure cottages and the various businesses that supported patients. While this first space focuses on the business side of the cure, on the cure porch and in the next gallery, you can hear the authentic voices of patients and see the artifacts that offered comfort.

*To cure sometimes, to relieve often, to comfort always.*

—Dr. Edward L. Trudeau





## THE BARTÓK GALLERY

You may have heard that many famous people found their way to Saranac Lake seeking health and recreation. Their stories are featured in the Bartók gallery, honoring the composer and ethnomusicologist Béla Bartók, who spent months in Saranac Lake while ill with leukemia. Here you'll find his artifact collection and recordings of his work.

Dozens of other famous visitors came as well, including writers Robert Louis Stevenson and Walker Percy, Philippine President Manuel Quezón, actor Al Jolson, and many more. Their stories will be available on a touchscreen interactive that you can explore.





## TRUDEAU GALLERY

Your visit to the Trudeau Building began with the Trudeau family story, and the final gallery returns to that subject. Several generations of the Trudeau family lived and worked here. This gallery serves as a spot to consider that extended family of doctors and artists, including cartoon artist Garry Trudeau, creator of *Doonesbury*. As the designer of the yearly Winter Carnival button, Garry Trudeau is the contemporary link between the family's past and present in Saranac Lake. Family artwork and artifacts will draw visitors into this colorful space and a Building Detective interactive will explore the second floor's evolution from family home to medical clinic.

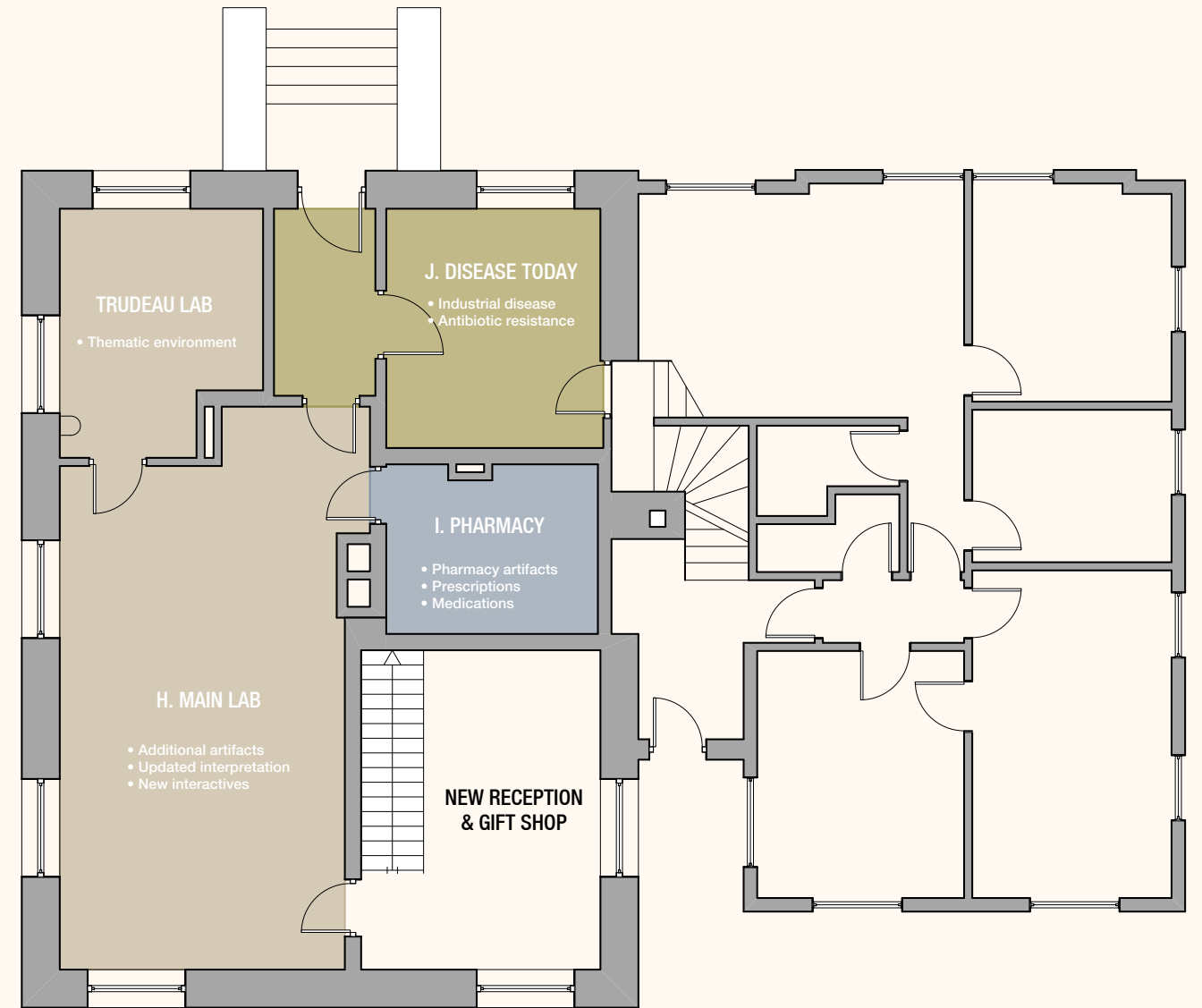
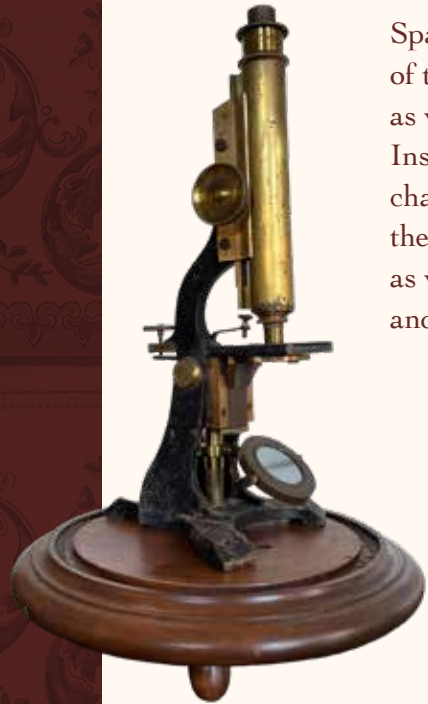




## SARANAC LABORATORY

You won't want to miss one of the most iconic buildings in town, the Saranac Laboratory. The acquisition of the Trudeau Building allows for the re-imagining and updating of Laboratory exhibits.

Space will now be available to expand the story of the historic research at the Saranac Laboratory, as well as to describe ongoing research at Trudeau Institute on Lower Saranac Lake and to consider the challenges of contemporary pandemics. You will find the updates include a Building Detective interactive, as well as hands-on opportunities with microscopes and an X-ray reader.





*Historic Saranac Lake has brought together an impressive team of design experts, museum professionals, and historians to develop a compelling vision for the expanded museum campus. The new museum promises to serve as an important cultural institution in the Adirondacks, and I look forward to watching it come into fruition.*

—Garry Trudeau



Original rendering courtesy of Landmark Consulting

## LET'S OPEN THE NEW MUSEUM

Now is your chance to finish the Trudeau Building's renovation and to support the new exhibits on our expanded campus.

**Won't you join us?**

### Contact

Amy Catania,  
Executive Director

518-891-4606 or  
[amy@historicsaranaclake.org](mailto:amy@historicsaranaclake.org)

**HSL** HISTORIC  
SARANAC  
LAKE



HSL HISTORIC  
SARANAC  
LAKE

518-891-4606

[amy@historicsaranaclake.org](mailto:amy@historicsaranaclake.org)